

**Canadian  
Radiological  
Foundation**

Research and Education  
in Our Own Hands



**Fondation  
radiologique  
canadienne**

La recherche et l'éducation  
entre nos mains

## Annual Report 2022



Aussi disponible en français sous le titre :

La fondation radiologique canadienne  
Rapport annuel 2022

Commercial reproduction and distribution of this report, and of its content, is prohibited except with written permission from the Canadian Radiological Foundation.

**Produced by:**

Canadian Radiological Foundation  
1120-220 Laurier Ave W, Ottawa, Ontario K1P 5Z9

**Contact:**

Corinne Gourlin  
Executive Assistant  
Tel.: 343-803-7803  
[cgourlin@car.ca](mailto:cgourlin@car.ca)  
[www.canradfound.ca](http://www.canradfound.ca)

# About the Canadian Radiological Foundation

## Vision

To ensure the sustainable future of patient-focused RADIOLOGY research, education and innovation excellence in Canada and beyond.

## Mission

To promote the art and science of radiology through research and education.

The Canadian Radiological Foundation (CRF) achieves its mission through the funding of projects which help to shape the future of radiology in Canada. In support of this directive, the CRF has sustained the following activities.

- **Research Awards** – In support of studies and research projects in diagnostic radiology or interventional procedures, the CRF provides the opportunity to apply for research awards accordingly.
- **Leadership Courses in Radiology** – The CRF provides new and unique leadership courses in radiology designed to help radiologists expand their leadership skills and contribute to the future of radiology in Canada.
- **Leadership Scholarships** – The CRF offers leadership scholarships to allow CAR members to acquire and develop leadership skills to become radiology leaders of tomorrow.
- **Educational Outreach** – The CRF sponsors CAR members to attend and lecture at various international radiology conferences.
- **CAR ASM Scientific Awards** – The CRF sponsors the CAR Annual Scientific Meeting (ASM) abstract awards. Many of the recipients have gone on to complete further research and contribute to radiology.
- **Reports and Guidelines** – The CRF has commissioned various reports such as *The Lifecycle Guidance for Medical Imaging Equipment in Canada*.





## Message From the President

I would like to take this opportunity to thank our dedicated Board of Directors, the CAR's support staff and most of all, our generous donors, without whom, all the valuable work that the CRF undertakes would not be possible. Also, a special thanks goes out to Dr. Bruce Forster who recently completed his four-year term as CRF President.

I am excited to announce, that over the past year, our Board has approved a motion to broaden our Board of Directors' membership with the recruitment of a Radiologist-in-Training Representative as well as a dedicated representative from the Canadian Heads of Academic Radiology (CHAR). Through our partnership with the CHAR, we are able to support many radiologists in training in their pursuit of radiology research and facilitate projects centring on medical imaging and patient care. We look forward to what these new representatives to the Board of Directors bring to our commitment to provide funding for impactful and unique projects and research that will benefit the practice of radiology in Canada.

The last few years have been particularly challenging times for everyone given the pandemic and financial instability of the markets. This is particularly true for charitable foundations like the CRF. We are most grateful to those donors who continue to support us through these challenging times. For those reading this report who have not been a regular donor, we would encourage you to look through the valuable projects and programs the CRF enables and ask you to seriously consider helping fund this crucial work and the future of Canadian Radiology.

Dr. Jamie Fraser, MD FRCPC FCAR  
President of the Canadian Radiological Foundation

## 2022-2023 Board of Directors

The CRF Board of Directors is elected by the members of the CRF at the Annual General Meeting (AGM). The CRF's 2022 AGM took place virtually on May 7<sup>th</sup>.

The 2022-2023 CRF Board Directors are:

Dr. James (Jamie) Fraser (NS) (President)



Dr. Andrea Lum (ON) (Vice President)



Dr. David Vickar (AB) (Secretary-Treasurer)



Dr. Emil Lee (BC)



Dr. Louis-Martin Boucher (QC)



# Projects

## Research Awards

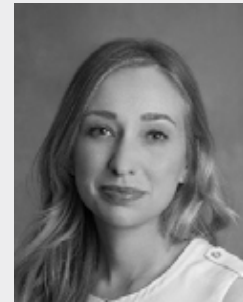
**In view of the COVID-19 pandemic**, the CRF, in conjunction with the Canadian Heads of Academic Radiology (CHAR), directed their funds accordingly to help our community and most importantly our patients during these challenging times and therefore awarded grants to:



**Dr. Brandon Collins (Health Sciences Center – Memorial University)** for *Effect of the COVID-19 pandemic on emergency departments presentations of appendicitis or diverticulitis across Eastern Newfoundland*



**Dr. Kate Hanneman (University Health Network)** for *Myocardial Injury and Outcomes Following COVID-19 Vaccination (MYOVAX Study)*



The CRF and CHAR also funded:  
**Dr. Helena Bentley (University of British Columbia/Vancouver General Hospital)** for *Developing process-based interventional radiology quality indicators: a novel approach to assessing the quality of care of patients undergoing interventional radiology procedures.*



# CAR ASM Contest Prizes

The CRF continues to support the Canadian Association of Radiologists' (CAR) Annual Scientific Meeting contests as part of its efforts to recognize and honour the work of Canadian radiologists and radiologists-in-training in advancing radiology research. The CRF was pleased to give the following prizes presented virtually at CAR 2022 held in April.

## Departmental Clinical Audit

### 1<sup>st</sup> Place

**Project:** Limited Utility of Abdominal CT Tomograms in Patients with Crohn Disease Presenting to the Emergency Department

**Authors:** Tina Madzima<sup>1</sup>, Satheesh Krishna Jeyaraj<sup>1</sup>, Luis Guimares<sup>1</sup>, Ania Kielar<sup>1</sup>, Adam Weizman<sup>2</sup>, David Dushenski<sup>2</sup>, Luke Devine<sup>2</sup>, Erin Kennedy<sup>2</sup>, Helen Macrae<sup>2</sup>, Nasir Jaffer<sup>1</sup>

**Institutions:** <sup>1</sup>University of Toronto, Joint Department of Medical Imaging, <sup>2</sup>University of Toronto, Mount Sinai Hospital

**2<sup>nd</sup> Place – McGill University:** **Aisin Ibrahim**, Marlee Parsons, Jana Taylor  
*Thyroid Nodules Detected on CT: A Retrospective Audit Study and Analysis of Differences in Reporting Practices Across Radiology Subspecialties*

**3<sup>rd</sup> Place – <sup>1</sup>Department of Radiology, <sup>2</sup>Division of Pediatric Oncology/Hematology/Bone Marrow Transplantation, <sup>3</sup>Department of Surgery, <sup>4</sup>Department of Pathology & Laboratory Medicine, BC Children's Hospital:** **Tracee Wee**<sup>1</sup>, Evelyn Lankester<sup>1</sup>, Caron Strahlendorf<sup>2</sup>, Sonia Butterworth<sup>3</sup>, Anna Lee<sup>4</sup>, Heather Bray<sup>1</sup>  
*Improving the Quality and Consistency of Ultrasound Reporting for Pediatric Breast Masses through Implementation of an Algorithm for Investigation*

## Radiologists in Training

### 1<sup>st</sup> Place

**Project:** Predicting Transplant Kidney Function Decline from Ultrasound Using an Interpretable Artificial Intelligence Model

**Authors:** Ricky Hu<sup>1</sup>, Zoe Hu<sup>1</sup>, Rohit Singla<sup>2,3</sup>, Cailin Ringstrom<sup>4</sup>, Grace Hu<sup>2</sup>, Victoria Lessoway<sup>4</sup>, Janice Redid<sup>4</sup>, Robert N. Rohling<sup>4</sup>, Christopher Nguan<sup>5</sup>, Timothy Murray<sup>6</sup>

**Institutions:** <sup>1</sup>School of Medicine, Queen's University, <sup>2</sup>School of Biomedical Engineering, <sup>3</sup>Faculty of Medicine, <sup>4</sup>Department of Electrical and Computer Engineering, <sup>5</sup>Department of Urological Sciences, <sup>6</sup>Department of Radiology, University of British Columbia

**2<sup>nd</sup> Place – University of Calgary:** **Jinghui Hu**, Benjamin A Caine, Nicholas Gibson, Kelly W Burak, Stephanie R Wilson  
*Nodules Identified on HCC Surveillance Ultrasound: Should CEUS or MRI be the Initial Test?*

**3<sup>rd</sup> Place – <sup>1</sup>Université de Montréal, <sup>2</sup>University of Alberta, <sup>3</sup>Vanderbilt University, <sup>4</sup>University of British Columbia:** **Kiana Lebel**<sup>1</sup>, Elizabeth Hillier<sup>2</sup>, Carol Hodgson<sup>2</sup>, Tracey Hillier<sup>2</sup>, Lucy B. Spalluto<sup>3</sup>, Wan Wan Yap<sup>4</sup>, Isabelle Trop<sup>1</sup>, Kathryn E. Darras<sup>4</sup>, Charlotte J. Yong-Hing<sup>4</sup>  
*Does Perception of Discrimination and Bullying Vary According to Gender, Ethnicity and the Level of Training? at Canadian Radiology Residency Programs*

## Educational Exhibits

### 1<sup>st</sup> Place

**Project:** Dual Energy CT Iodine Maps Improve Detection of Anastomotic Leaks, Visceral Perforations and Fistula

**Authors:** Divyajeet Rai, Jamie Russell, Nicolas Murray, Silvia Chang, Gavin Sugrue

**Institutions:** Department of Radiology, Vancouver General Hospital

**2<sup>nd</sup> Place – University of Calgary:** **Anne-Marie Brisson**, Zachary Guenther  
*Pattern-Based Approach to Diffuse Lung Disease*

**3<sup>rd</sup> Place – Faculty of Medicine, University of British Columbia, Emergency and Trauma Radiology, Vancouver General Hospital:** **Sarah Keys**, Shamir Rai, Nicolas Murray  
*An Approach to Acute Traumatic and Non-Traumatic Diaphragmatic Abnormalities*

## Scientific Exhibits

### 1<sup>st</sup> Place

**Project:** Transvenous CSF-Venous Fistula Embolization in Spontaneous Intracranial Hypotension

**Authors:** Donna Parizadeh<sup>1</sup>, Olga Fermo<sup>2</sup>, David Miller<sup>1</sup>, Vivek Gupta<sup>1</sup>, Prasana Vibhute<sup>1</sup>, Todd Rozen<sup>2</sup>, Thien Huynh<sup>1</sup>

**Institutions:** <sup>1</sup>Department of Radiology, <sup>2</sup>Department of Neurology, Mayo Clinic

**2<sup>nd</sup> Place – Emergency and Musculoskeletal Radiology Departments, Vancouver General Hospital:** **Jennifer Hennebry**, Waleed Alkhadi, Faisal Alsugair, Dustin Hofstede, Adnan Sheikh, Savvas Nicolaou, Hugue Ouellette, Nicolas Murray  
*Can Dual Energy CT Differentiate Between Types of Peri-articular Mineralized Foci?*

**3<sup>rd</sup> Place – The Ottawa Hospital Research Institute, University of Ottawa:** **Sanam Ebrahimzadeh**, Nayaar Islam, Haben Dawit, Jean-Paul Salameh, Sakib Kazi, Nicholas Fabiano, Lee Treanor, Marissa Absi, Faraz Ahmad, Paul Roprai, Ahmed Al Khalil, Kelly Harper, Neil Kamra, Ross Prager, Mariska MG Leeflang, Lotty Hooft, Christian B van der Pol, Samanjit S Hare, Carole Dennie, René Spijker, Jonathan J Deeks, Jacqueline Dinnes, Kevin Jenniskens, Daniël A Korevaar, Jérémie F Cohen, Ann Van den Bruel, Yemisi Takwoingi, Janneke van de Wijgert, Junfeng Wang, Elena Pena, Sandra Sabongui, Matthew F McInnes  
*Cochrane "Living" Systematic Review on Diagnostic Accuracy of Imaging for COVID-19: Version 4*

## Donations

In April 2019, the CRF launched its **500 Club** campaign to inspire 500 radiologists to help increase the Foundation's impact on imaging care and the Canadian radiological landscape.

- We are targeting a goal of \$250,000 annualized contributions over three years.
- Donations are used to advance initiatives related to the five CRF pillars.
- Donors receive recognition from CRF in communications, access to Donor Lounge at the CAR Annual Scientific Meeting and a limited-edition pin recognizing membership to the 500 Club.

The CRF would like to sincerely thank all its funders for their donations over the years. Their contributions have allowed the CRF to develop projects and initiatives which otherwise would not have been possible.

Special acknowledgement to our corporate donor Siemens Healthineers for their contribution.



**Total Donations received in 2022: \$31,875**

**The CRF would like to publicly recognize the following donors:**

Miriam Bambonye	Thomas Enright	Martin Lecompte	Joseph Najjar
Joshua Barnaby	Marco Essig	Emil Lee	Elsie Nguyen
Michael Barry	Darren Ferguson	Edward Lembke	Barbara Nitsch
Graham Bay	Karen Finlay	Emmanuelle Lemercier	Michael Patlas
Cassidy Bell	Carolyn Flegg	Jacques Lévesque	Visal Pen
Pamela Boustros	Bruce Forster	David Li	Eric Pike
Mike Bristow	James Fraser	Jennifer Lombard	Eduardo Portela de Oliveira
Brent Burbridge	Natalia Gorelik	Andrea Lum	Josephine Pressacco
Greg Butler	Milad Hamwi	Deborah Mabin	Linda Probyn
Silvia Chang	Connie Hapgood	Stewart MacMillan	Martin Reed
Jeffrey Chankowsky	Scott Harris	Maureen Madigan	John Ricketts
Nicholas Chapman	Angus Hartery	Daria Manos	Isabelle Rousseau
Carl Chartrand-Lefebvre	Pejman Maralani	Andrew Mason	Uzma Shaheen
Joseph Chin	Yoan Kagoma	William Miller	Gilles Soulez
Andreu Costa	Ania Kielar	Antoine Montplaisir	Jana Taylor
Amélie Damphousse	David Koff	Alan Moody	Greg Thompson
Raquel del Carpio-O'donovan	Robert Lambert	Amol Mujoomdar	David Vickar
Carole Dennie			

For more information on the CRF or to submit a request for funding consideration, please visit the **CRF website**.